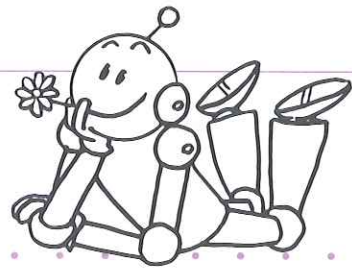
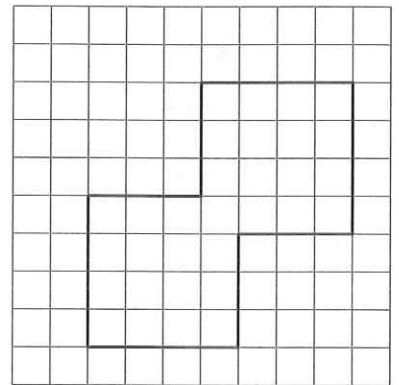
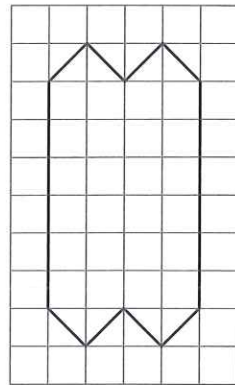
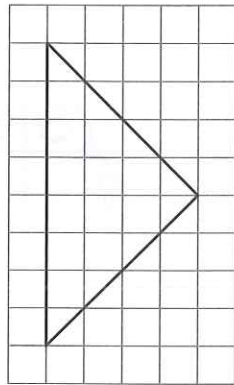
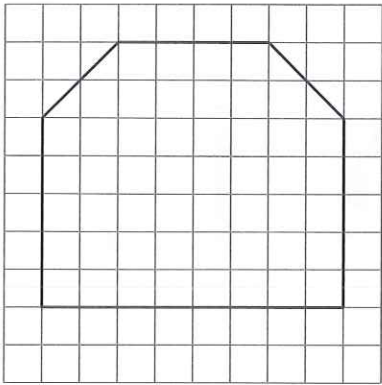
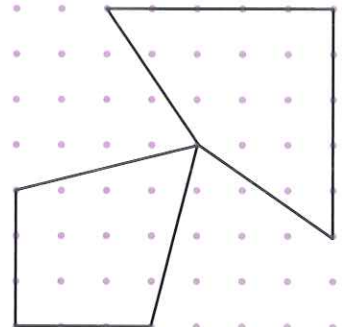
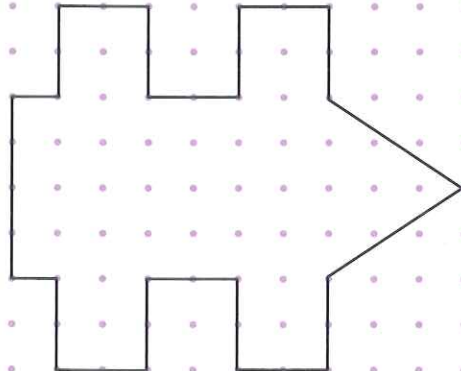
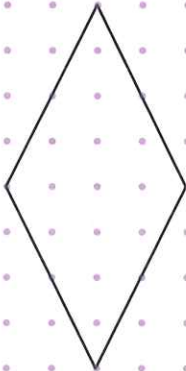


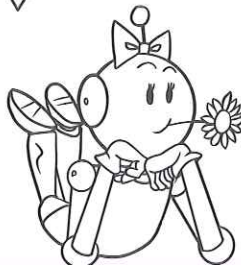
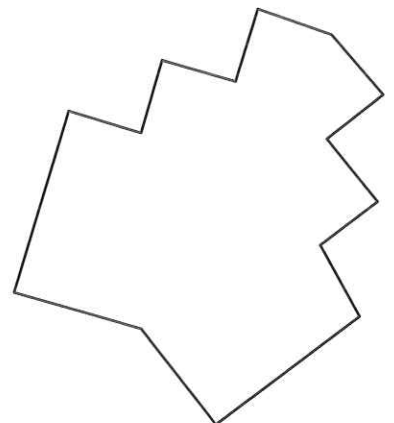
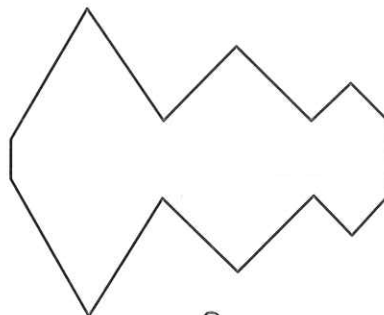
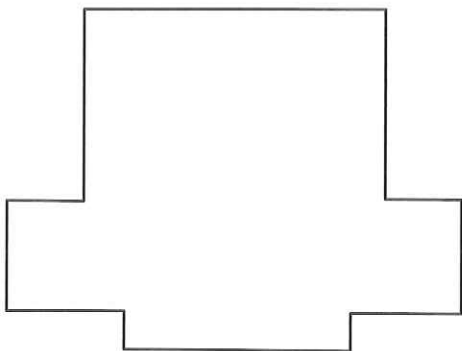
1 Trace les axes de symétrie.



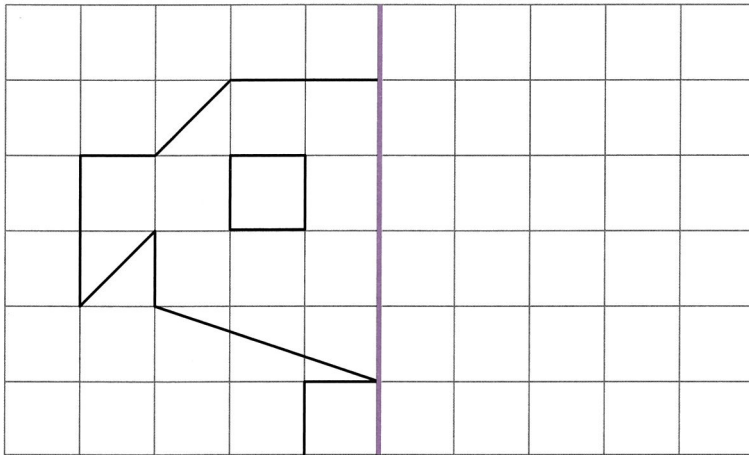
2 Trace les axes de symétrie.



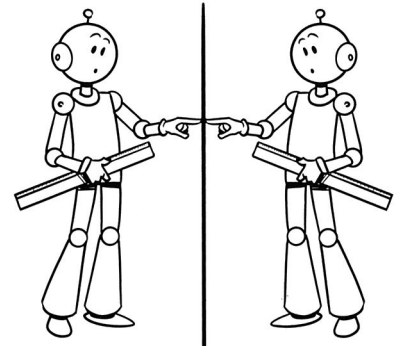
3 Trace les axes de symétrie.



1 Complète cette figure par symétrie, puis colorie.

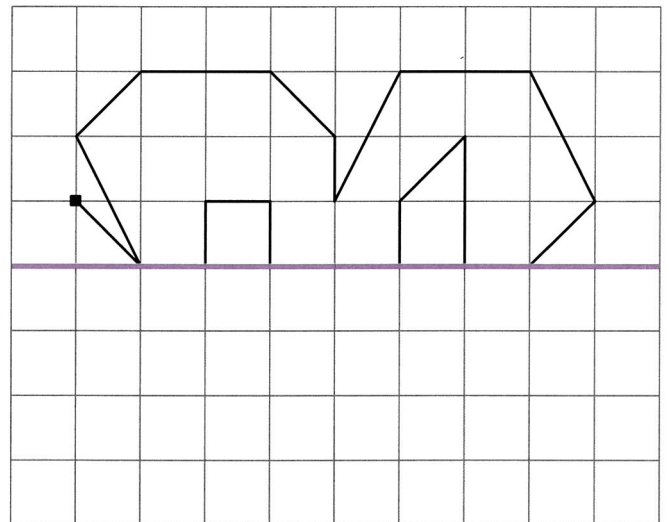
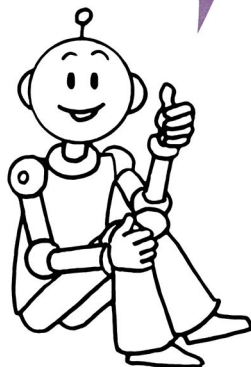


Compte bien tes carreaux à partir de l'axe de symétrie !



2 Complète cette figure par symétrie, puis colorie.

Attention ! L'axe de symétrie est horizontal.
Ton dessin va donc s'inverser vers le bas.



3 Complète cette figure par symétrie, puis colorie.

